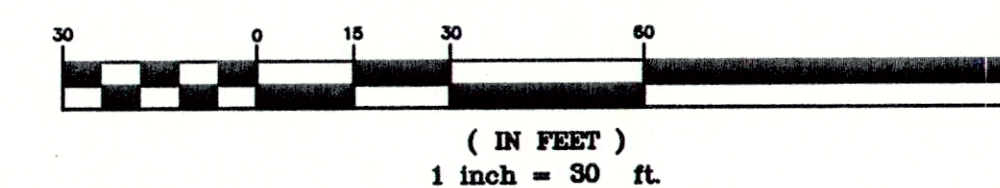


BENCHMARK:
PROJECT BM.:
 CITY OF HOUSTON SURVEY MARKER 5259/1413
 ELEV. = 69.93'

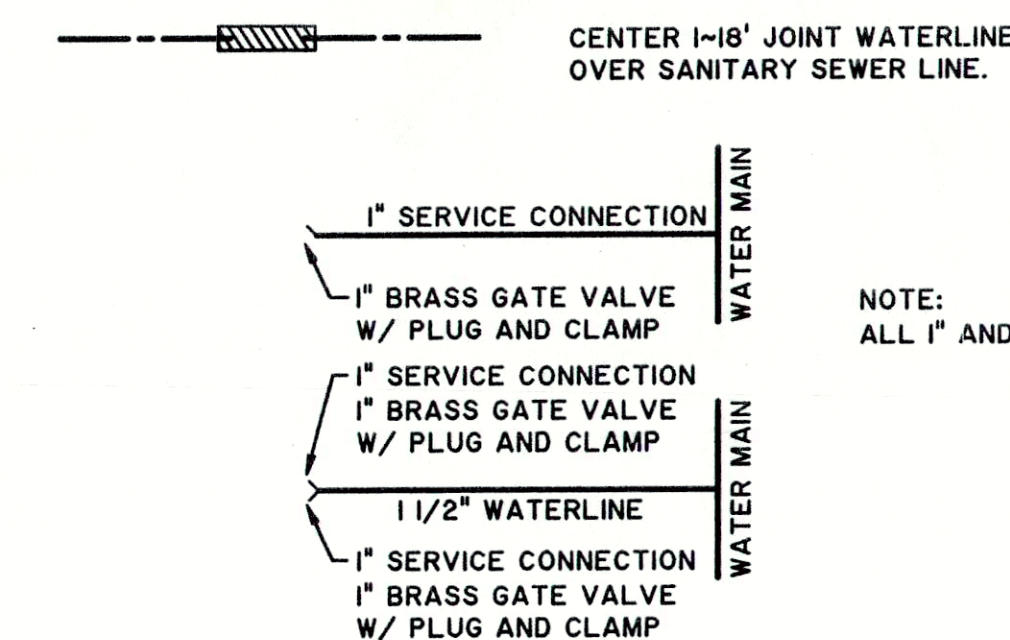
FLOOD PLAIN:
TSARP INFORMATION:
 THIS PROJECT LIES WITHIN UNSHADED ZONE "X"
 PER PRELIMINARY TSARP MAPPING FLOOD
 INSURANCE RATE MAP PANEL NO. 48201C0660L
 DATED SEPTEMBER 30, 2004.

GRAPHIC SCALE



TYPE OF FIXTURES OR GROUP OF FIXTURES	WATER-SUPPLY FIXTURE-UNIT VALUE (w.f.u.)			Typical Unit This Project
	Hot	Cold	Combined	
Bathtub (with/without overhead shower head)	1.0	1.0	1.4	1.4
Clothes washer	1.0	1.0	1.4	1.4
Dishwasher	1.4	-	1.4	1.4
Hose bibb (silcock)	-	2.5	2.5	2.5
Kitchen sink	1.0	1.0	1.4	1.4
Laundry	0.5	0.5	0.7	-
Laundry tub	1.0	1.0	1.4	-
Shower stall	1.0	1.0	1.4	-
Water closet (tank type)	-	2.2	2.2	-
Full-bath group with bathtub (with/without shower head) or shower stall	1.5	2.7	3.6	x2-7.2
Half-bath group (water closet and lavatory)	0.5	2.5	2.6	2.6
Kitchen group (dishwasher and sink with/without garbage grinder)	1.9	1.0	2.5	2.5
Laundry group (clothes washer standpipe and laundry tub)	1.8	1.8	2.5	2.5
TOTAL TYPICAL UNIT THIS PROJECT FOR THIS PROJECT USE				22.9

WATERLINE LEGEND



NOTE:
 ALL 1" AND 1 1/2" WATERLINE BY PLUMBER

25 F.U. FIXTURE UNITS PER DWELLING



GENERAL NOTES

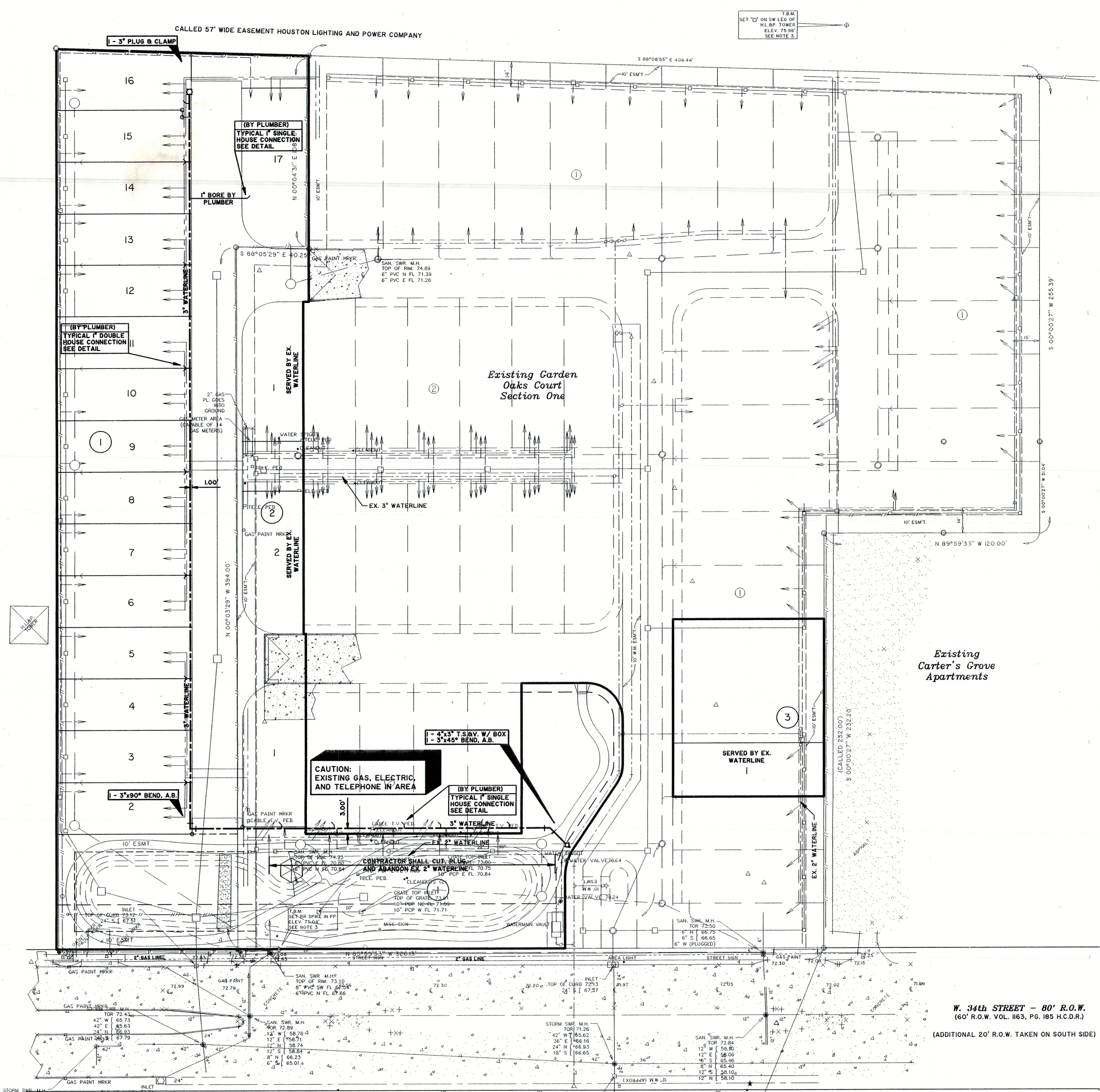
- ALL UNDERGROUND UTILITY ARE BASED ON THE BEST AVAILABLE INFORMATION. THE CONTRACTOR SHALL VERIFY EXACT UTILITY LOCATIONS PRIOR TO ANY CONSTRUCTION. CONTRACTOR SHALL CALL THE TEXAS ONE CALL SYSTEM AT 1-800-245-4545 PRIOR TO ANY EXCAVATION.
- ALL WATERLINE PIPE SHALL HAVE A 4' (MIN.) COVER.
- ALL WATERLINE SHALL BE A MINIMUM OF SCH 40 PVC PRESSURE PIPE, UNLESS INDICATED OTHERWISE.

REVISIONS

Carter-Burgess
 Consultants in Planning, Engineering, Architecture
 Construction Management and Related Services
 CARTER & BURGESS, INC.
 55 WAUGH DRIVE, SUITE 300
 HOUSTON, TX 77007-5842

CITY OF HOUSTON
 GARDEN OAKS COURT PARTIAL REPLAT AND
 EXTENSION NO. 1 SITE IMPROVEMENTS
PRIVATE WATERLINE LAYOUT

SCALE: 1" = 30'	PROJ. NO. 030784.050.1000
DESIGNED: N.L.R.	DATE
DRAWN: N.L.R.	SHEET
APPROVED: C.J.M.	JULY, 2006 8 of 15



CAUTION: CONTRACTOR TO WORK WITH EXTREME CAUTION WHILE WORKING NEAR AND AROUND UNDERGROUND CENTERPOINT ENERGY GAS LINE.

ANY CENTERPOINT ENERGY RELOCATION NECESSARY IS FULLY REIMBURSABLE TO CENTERPOINT ENERGY AND REQUIRES A MINIMUM TWO WEEK NOTICE.

NOTE: ALL AREAS NOT UNDER FOOTPRINT OF BUILDINGS ARE HEREBY DESIGNATED AS COMMON AREA TO BE MAINTAINED BY HOME OWNERS ASSOCIATION.

NOTE: CONTRACTOR TO VERIFY ALL FLOWLINES OF EXISTING APPURTENANCES PRIOR TO START OF CONSTRUCTION. ANY DISCREPANCIES TO BE REPORTED TO ENGINEER IMMEDIATELY.

K:\S&B\030784\050\050\Private\wg2\wg2.dwg 7/18/2006 3:08:20 PM EDT