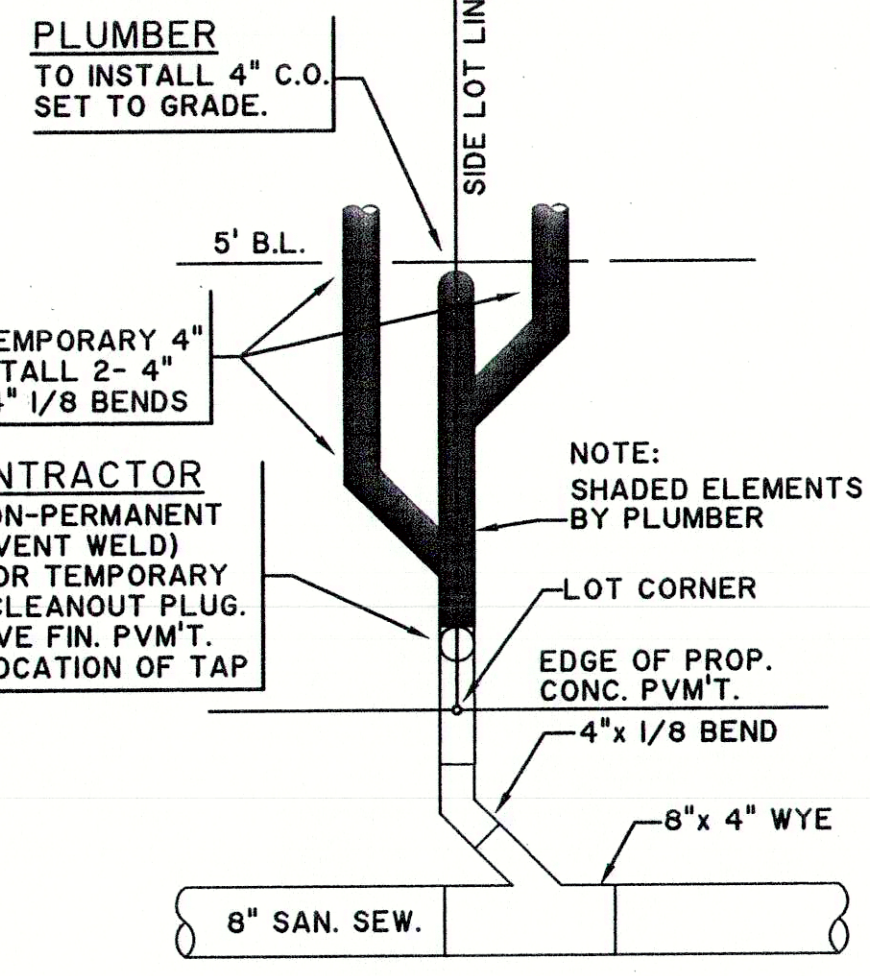
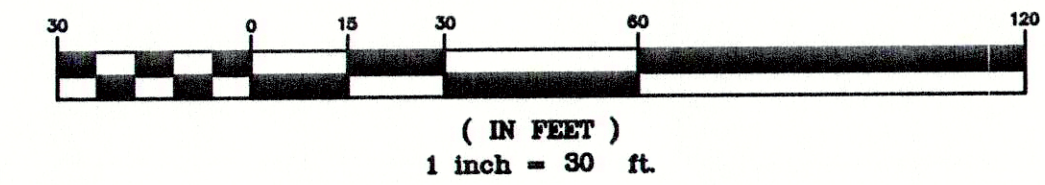


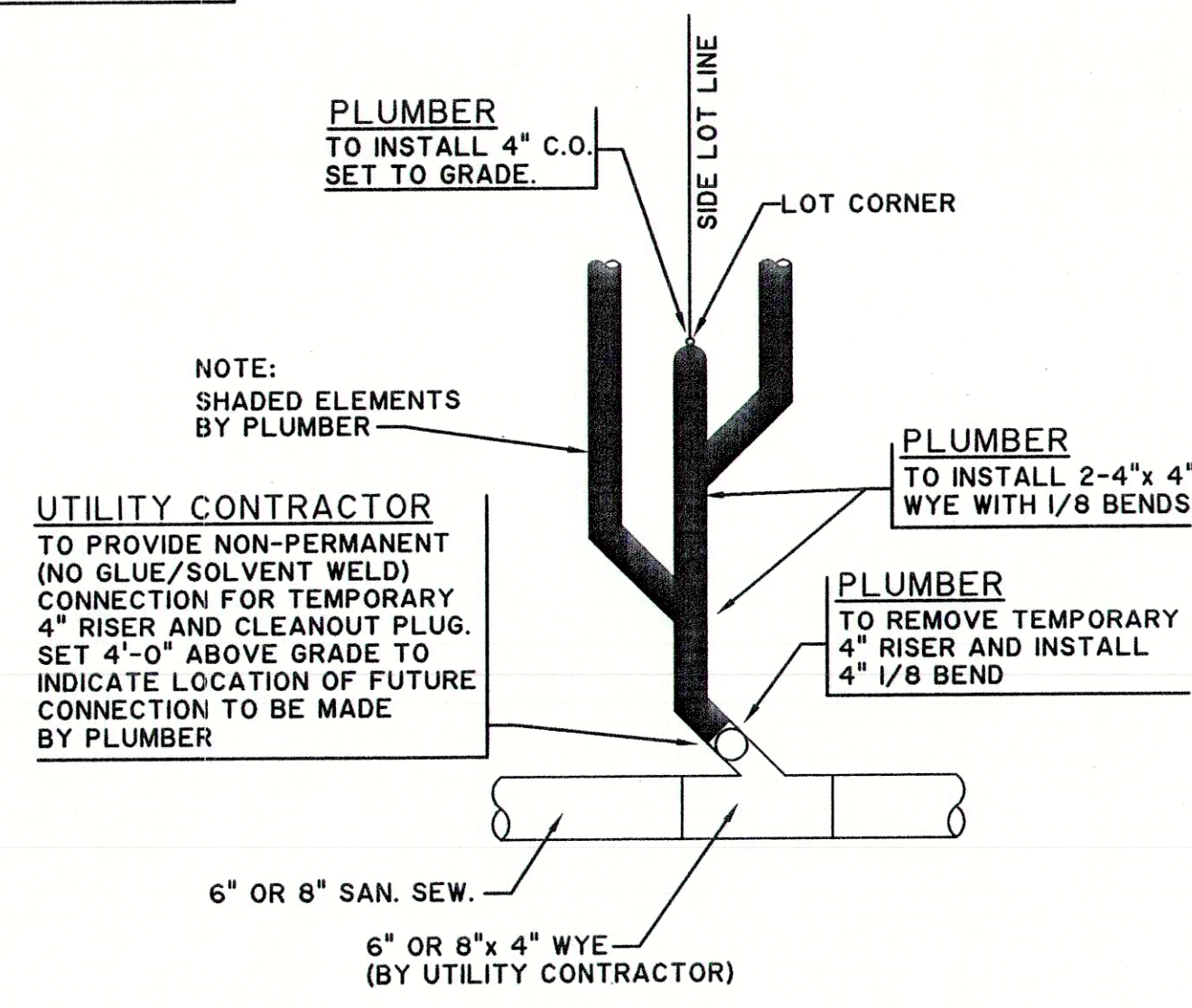
BENCHMARK:
PROJECT BM.:
 CITY OF HOUSTON SURVEY MARKER 5259/1413
 ELEV. = 69.93'

FLOOD PLAIN:
TSARP INFORMATION:
 THIS PROJECT LIES WITHIN UNSHADED ZONE "X"
 PER PRELIMINARY TSARP MAPPING FLOOD
 INSURANCE RATE MAP PANEL NO. 48201C0660
 DATED SEPTEMBER 30, 2004.

GRAPHIC SCALE



PLAN VIEW
 PROVISION FOR FUTURE
 HOUSE CONNECTION WHEN
 SEWER MAIN IS UNDER
 PROPOSED CONCRETE
 PAVEMENT



PLAN VIEW
 PROVISION FOR FUTURE
 HOUSE CONNECTION WHEN
 SEWER MAIN IS NOT UNDER
 CONCRETE PAVEMENT

SANITARY LEGEND

- PROPOSED SANITARY SEWER AND MANHOLE
- PROPOSED 4" DOUBLE SANITARY SEWER SERVICE LEAD W/ CLEANOUT
- PROPOSED 4" SINGLE SANITARY SEWER SERVICE LEAD W/ CLEANOUT
- CENTER TO-CENTER JOINT SANITARY SEWER OVER WATERLINE
- EXISTING SANITARY SEWER AND MANHOLE
- 25 F.U.
- CONNECT TO EXISTING SANITARY SEWER M.H.
- CONSTRUCT SANITARY SEWER M.H. ON EX. SANITARY SEWER

GENERAL NOTES

1. ALL UNDERGROUND UTILITY ARE BASED ON THE BEST AVAILABLE INFORMATION. THE CONTRACTOR SHALL VERIFY EXACT UTILITY LOCATIONS PRIOR TO ANY CONSTRUCTION. CONTRACTOR SHALL CALL THE TEXAS ONE CALL SYSTEM AT 1-800-245-4545 PRIOR TO ANY EXCAVATION.
2. ALL SANITARY SEWER PIPE SHALL BE SDR-26 PVC, UNLESS INDICATED OTHERWISE.
3. CONTRACTOR SHALL ADJUST MANHOLE RIMS, OUTSIDE OF PAVED AREAS, 3-INCHES ABOVE FINISHED GRADE.
4. CONTRACTOR SHALL ADJUST MANHOLE RIMS IN PAVED AREAS FLUSH WITH GRADE.
5. CLEANOUT FRAME AND COVER FOR SANITARY IN PAVED AREAS SHALL BE OF CAST IRON AND DESIGNED FOR TRAFFIC LOADING.
6. 4" SANITARY LEADS SHALL BE SLOPED AT A MIN. OF 1/10X. 6" SANITARY LEADS SHALL BE SLOPED AT A MIN. OF 0.65X.

CONFLICT RESOLUTION TABLE

CONFLICT POINT	SAN. SEW. FLOWLINE	SAN. SEW. TOP OF PIPE	STM. SEW. FLOWLINE	STM. SEW. BOTTOM OF PIPE	CLEARANCE
CPI	8" - 69.15	8" - 69.82	12" - 67.65	12" - 68.65	0.50'
CP2	8" - 69.20	8" - 69.87	12" - 67.64	12" - 68.64	0.56'



Calvin J. Morgan

REVISIONS

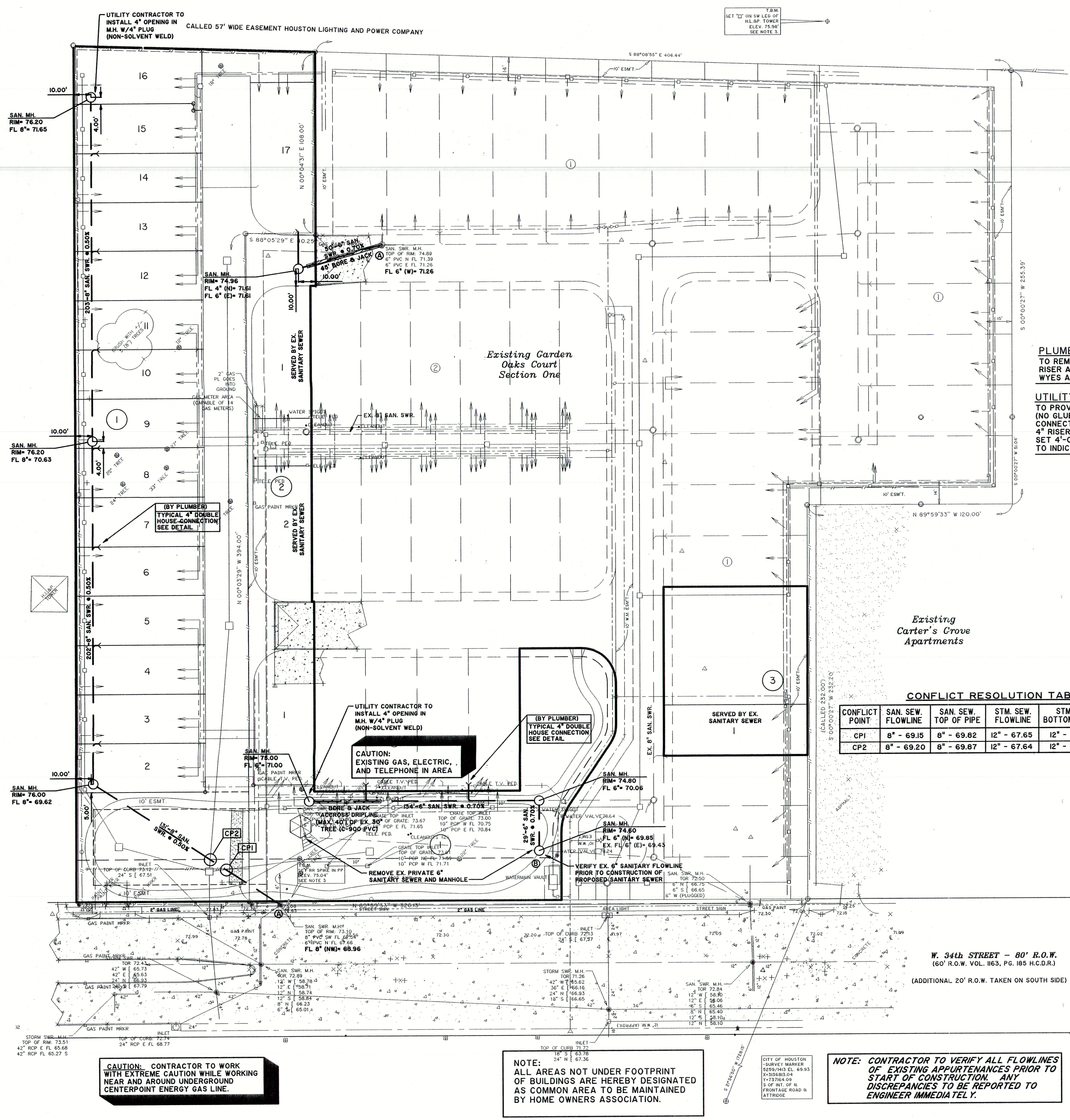
NO.	DESCRIPTION

Carter & Burgess
 Consultants in Planning, Engineering, Architecture, Construction Management and Related Services
CARTER & BURGESS, INC.
 55 WAUGH DRIVE, SUITE 300
 HOUSTON, TX 77007-5842

CITY OF HOUSTON
 GARDEN OAKS COURT PARTIAL REPLAT AND
 EXTENSION NO. 1 SITE IMPROVEMENTS

PRIVATE SANITARY SEWER LAYOUT

SCALE: 1" = 30'	PRJ. NO. 030784.0501.0010
DESIGNED: N.L.R.	DATE
DRAWN: N.L.R.	SHEET
APPROVED: C.J.M.	JULY, 2006 7 of 15



CAUTION: CONTRACTOR TO WORK WITH EXTREME CAUTION WHILE WORKING NEAR AND AROUND UNDERGROUND CENTERPOINT ENERGY GAS LINE.

NOTE: ALL AREAS NOT UNDER FOOTPRINT OF BUILDINGS ARE HEREBY DESIGNATED AS COMMON AREA TO BE MAINTAINED BY HOME OWNERS ASSOCIATION.

NOTE: CONTRACTOR TO VERIFY ALL FLOWLINES OF EXISTING APPURTENANCES PRIOR TO START OF CONSTRUCTION. ANY DISCREPANCIES TO BE REPORTED TO ENGINEER IMMEDIATELY.

W. 34th STREET - 80' R.O.W.
 (60' R.O.W. VOL. 1163, PG. 185 H.C.D.R.)
 (ADDITIONAL 20' R.O.W. TAKEN ON SOUTH SIDE)

X:\34th\enr\307840501.dwg, P:\enr\34th\enr\307840501.dwg, 7/18/2006, 3:09:26 PM, CDT